

A C L A S S O F I T S O W N



Kohinoor City Phase II Residences



COMFORTABLE, STYLISH
LUXURY RESIDENCES
WITH 2 BHK, 3 BHK,
DUPLEX HOUSES & PENT
HOUSES WITH TERRACE.

Common Amenities

- Two Level Basement Car Parking
- Eco friendly environment with Rain water Harvesting system
- Sewage Treatment Plant for Flushing
- Secured Gated Community with access control
- Fire Fighting System
- Well designed Recreation Areas
- Free membership of Life Style Club with swimming pool
- Safe Snoozing zones & play zones

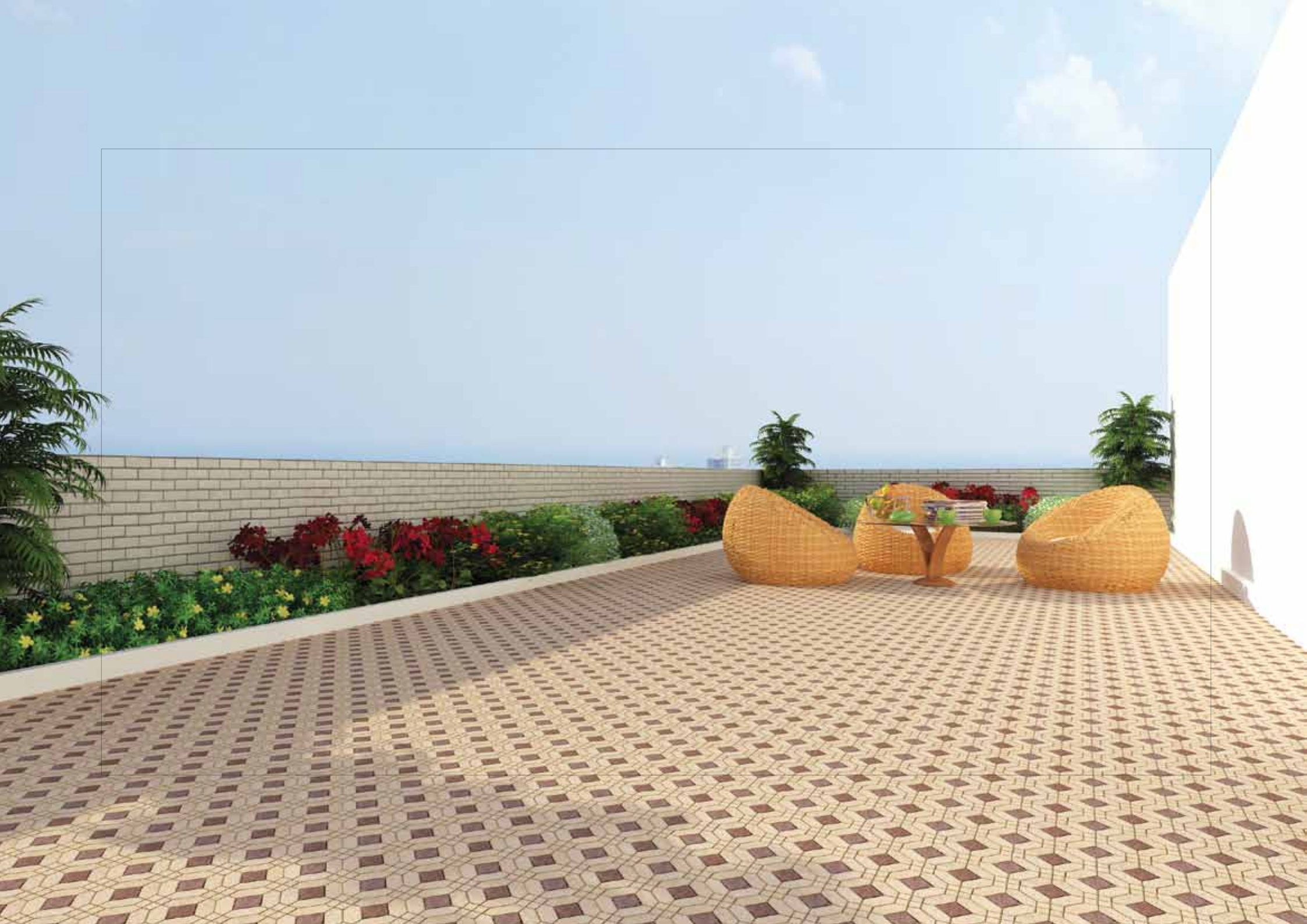


DUPLEX HOUSE

Duplex house with double height lavish living room which will give you a royal feeling and elegant design of bedroom, kitchen & wash room will definitely satisfy your desire of having luxurious house.







PENTHOUSE

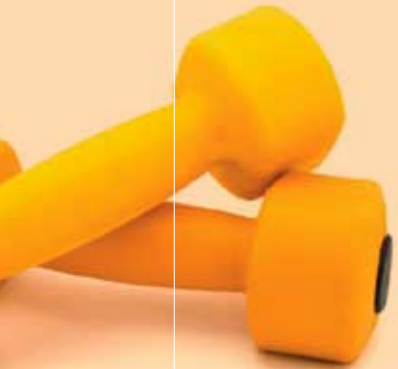
A classy amazing penthouse has four bedrooms with a well designed living room and spacious terrace where you & your family can enjoy tea with a spectacular view of surroundings.



LIFESTYLE CLUB

Lush Green Landscaping, kids play area & wide open spaces will rejuvenate your spirits at Kohinoor City

- Swimming Pool with Jacuzzi & Baby Pool
- Gymnasium
- Massage & Steam Room
- Table Tennis Court
- Squash Court
- Carrom & Pool Tables
- Multipurpose Hall / Badminton Court
- Party Lawn
- Walking Track





OTHER FACILITIES IN KOHINOOR CITY...





Shopping Mall

- Shopping facilities take you into another world of elegance and class. A fabulous food court, fine dining restaurants, banquet facilities, open spaces, lush foliage, fresh air and open green spaces.

Hotel

- A 100 room luxury hotel at your doorsteps

Hospital

- Kohinoor Hospital, a 150 Bed multi-specialty hospital, has patient friendly design and ambience supported by 24x7 Emergency, Radiology and Imaging, Pathology, Diagnostics, Dialysis services with a Pharmacy and Blood Bank. Emphasis will be on Daycare Services and Lifestyle Management.

Education

- Kohinoor International School ICSE / IGCSE Board School
- Over 2000 plus student capacity with amenities that will make the school a preferred haven for the children rather than a mere class system
- Business School
- Science, Arts & Commerce College
- State-of-the-art Auditorium

Office Spaces

- 9 lakh sq ft of spacious and lavish office spaces

LOCATION ADVANTAGE



- Close to the geographical center of Mumbai at Kurla (W). Therefore accessible equally easily from the eastern and the western suburbs as well as from South Mumbai and Navi Mumbai.
- Bandra-Kurla-Complex is 3 Km away.
- 10 minutes walking distance from Vidyavihar station.
- Direct BEST bus service from Vidyavihar to Kohinoor City.
- Located off LBS Road. Therefore within easy reach even for those commuting by road.
- Direct bus links to Andheri, Sion, Bandra, Vidyavihar, Ghatkopar, Mulund and South Mumbai.
- The Santacruz-Chembur Link Road runs very close to Kohinoor City, which makes the Western and Eastern Express highways minutes away.
- Proposed Andheri-Versova-Ghatkopar Metro line passes in close proximity.
- Finally, Kohinoor City's proximity to both the domestic and the international airports is like the icing on the cake!

Kohinoor City

MASTER PLAN



BUILDING SPECIFICATION

CIVIL

- RCC framed structure
- Earth quake resistance structure
- Brick masonry internal & external partition walls
- External sand faced cement mortar plaster
- Internal Cement plaster + Gypsum finishing on the top
- Speed Passenger Elevators

FLOORING

- Italian Agglomerated Marble in Living Room.
- Vitrified Floor Tiles in Bedroom
- Non-Skid vitrified tile in kitchen & Toilets
- Lift Lobby Passage flooring will be of non-skid vitrified tile and natural stone
- Staircase will be finished in kotah stone
- Stilt will be finished with concrete pavers

PAINTING

- Internal surfaces flats finished with acrylic paint
- External building face will be finished in Textured Acrylic paint

DADO

- Vitrified tiles for toilet dado of full height
- Vitrified tiles for kitchen dado above kitchen Counter top

WINDOWS

- Polished granite stone sill for all windows
- All windows aluminum anodized, sliding type with tinted glass
- Mosquito net provided in all windows

DOORS

- Main door frames is polished wood
- Toilet door frames of marble & granite stone
- Main door Commercial flush door finished with laminate of reputed make and with necessary hardware
- Bedroom doors will be Commercial flush door with laminate finish of reputed make and with necessary hardware
- Toilet doors will be Commercial Marine flush door finished with laminate and with necessary hardware

KITCHEN

- Ready to use kitchen with hob & chimney
- Modular kitchen cabinets will be provided with 19 mm thick polished granite counter top
- Water purifier will be provided in kitchen
- Exhaust hood and built in four burner range
- MGL Piped gas connection
- Gas detector in kitchen
- Stainless steel sink in kitchen
- Exhaust fan

PLUMBING

- Toilet & Kitchen will have concealed plumbing of G.I. pipes
- International Design sanitary Fitting & Fixture
- Shower Panel in Master Bedroom

ELECTRICAL WORK

- Building will be provided with 2 elevators
- Adequate Concealed electrical points in each room will be provided
- All toilets will be provided with 3 liters geyser
- Video door phone security system

RAILING

- Glass Railing with M.S. Framework

KOHINOOR GROUP



The principle of mutuality of success is at the very core of Kohinoor Group's philosophy. Kohinoor's vision is "To grow perpetually" and we know that long lasting alliances with our customers are key to achieve this vision. And so is a focus on excellence in everything we undertake. You will witness this concern for excellence when you visit Kohinoor City.

Kohinoor City is the first township in Mumbai specifically developed around Mumbaikar's concerns from start to finish.

With one of the best teams of real estate development professionals working on its varied projects, Kohinoor has developed residential complexes and office buildings right from the facilities planning through to interior designing and implementation. Kohinoor has repeatedly delivered turnkey services to its customers across a wide spectrum of products.

Kohinoor City is strategically located off L.B.S Marg an eight minute 3 kilometre drive from the Bandra Kurla Complex and a ten minute walk from Vidya vihar station. This 1.5 million square feet development will boast all the amenities expected in a contemporary township. However what sets Kohinoor City apart is the thought process behind each amenity and the detailed approach taken to ensure customer satisfaction.

Kohinoor City is only Integrated Township in Heart of Mumbai.

Principal Architect	SSA Architects
Structural Engineers	S.W Mone & Associates
Liasoning Architect	Anil Patil Consultants Pvt Ltd
Services Consulants	Plumbing : ECON
	Electrical : SBR Consultants
Legal Advisor	A. R. Vaidya & Company, Advocates & Solicitors



For Kohinoor City bookings and site visits,
please contact :

Kohinoor City Office

Kirol Road, Off L.B.S Marg

Kurla (West), Mumbai 400 070

Call: 6140 8400 / 6140 8401

Email: sales@kohinoorconstructions.co.in

www.kohinoorgroup.co.in



Kohinoor

Disclaimer: The information contained in this brochure is only indicative of the kind of development in progress. It is prepared and issued in good faith and is for guidance only. It does not constitute part of an offer or contract. Subject to the approval of the authorities and or in the interest of continuing improvement the developers reserve the right to change plans, specifications, or features without prior notice or obligation.